

work outside!

Life skills!

Get ya boots on!

Get a bed, fed, and a bit of dosh too!

earn while you learn

Zero Fees!

Farm Intern Programme PROSPECTUS



be part of the team

Jobs not debt when finished - no student loan!

live on site

Learn to chainsaw

life changing



LAND BASED TRAINING
better skills, better jobs, better future

2 years of your life to change your life

train your own farm dogs

What is it about?

- It's a training and work programme for people dead keen on farming!
- 4 days a week are working on farm and one day a week is in class.
- You get FREE stuff - farming gear and uniform.
- You go on trips to the Field Days and do other cool things like learning how to crutch and shear sheep, ride quads, get your first aid certificate, use a chainsaw, fence a paddock and learn heaps of other on farm skills.
- You will have to agree to follow the rules and be health and safety conscious.
- You'll also have to complete some theory work but there are NO EXAMS!
- At the end of year one you will have the NZ Certificate in Agriculture Level 3.
- In year two you can continue your studies and gain the NZ Certificate in Agriculture Level 4 if you want to.



LAND BASED TRAINING
better skills, better jobs, better future

When can you do it?



The programme starts in February and finishes in 44 weeks. Usually this will be February to December.

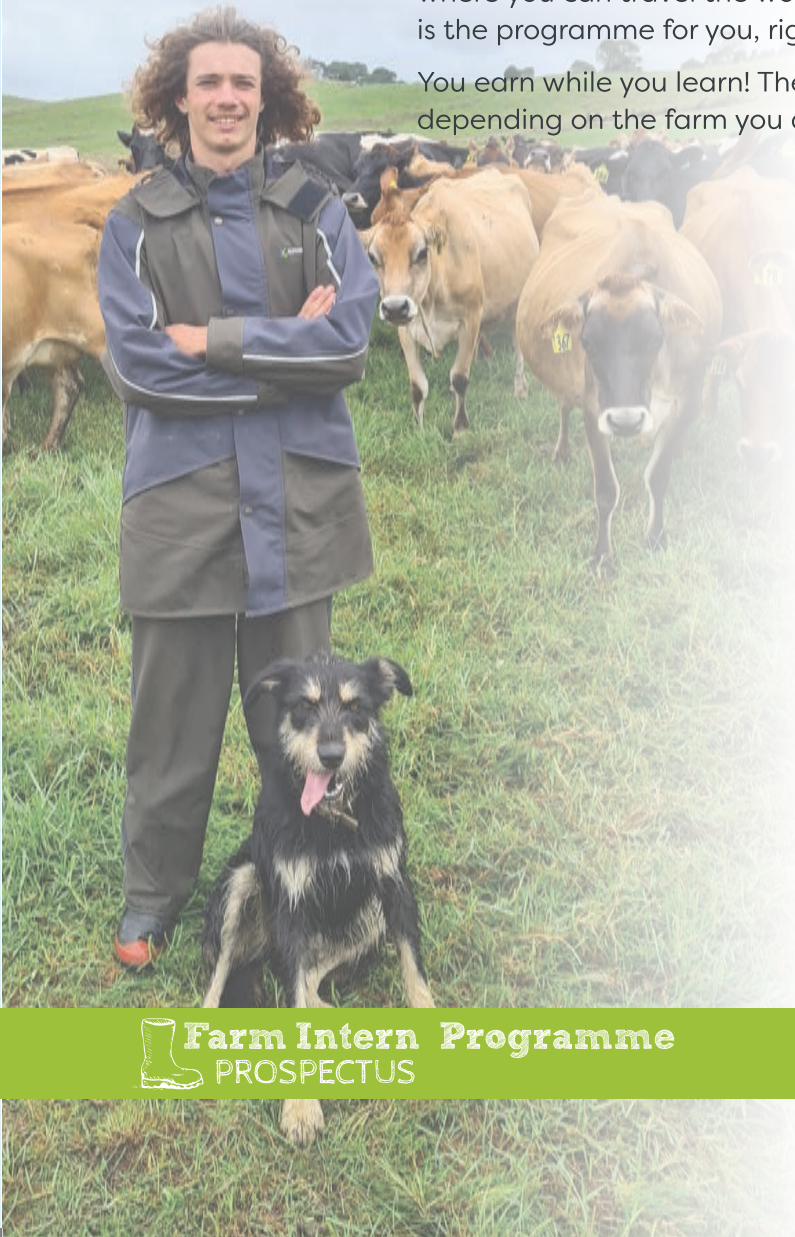
You can go home at weekends, still play sport although there may be some extra busy times on farm when you may have to help out a bit longer.

OK - what's the catch?

No catches!

If you want a career in farming, fencing or even shearing where you can travel the world and earn big bucks - this is the programme for you, right here in Northland!

You earn while you learn! There are several options depending on the farm you are matched with.



Who are we?

Whangarei Agricultural & Pastoral Society

Whangarei Agricultural & Pastoral Society is a not for profit, registered charitable trust. We are a well-established and respected local business with over 200 members. We have proudly run the A&P show in Whangarei since the late 1860's.

In line with our core values we have a keen interest in the training and development of young people in the agriculture industry. For 17 years we have awarded a scholarship to young people studying in the industry and we are now extending that with our Farm Intern programme.

Students of the A&P society's programme work on farm gaining industry and life skills concurrently while gaining formal qualifications.

Land Based Training Ltd

Land Based Training Ltd was incorporated on the 9th day of December 1996 and is registered as a private training establishment by the New Zealand Qualifications Authority (NZQA) under the provisions of the Education Act 1989 and its subsequent amendments. Land Based Training is an innovative Tertiary Education provider with its head office based in Whanganui and branching out with courses and facilities throughout the North Island of New Zealand.

Land Based Training is focused on quality and safety. Our Quality Management System (QMS) is based on the NZQA guidelines and policies for registration and accreditation. Land based Training is a Category 1 Provider with NZQA. Achieving Highly Confident in Education Achievement and Highly Confident in Self-Assessment.



Want to know more?

The Farm Intern Programme is a one or two year, full time course of study. Interns are supported through gaining their levels 3 and 4 NZ Certificate in Agriculture. Generally each week interns spend one day in a classroom workshop environment learning the theory for the qualification while the other four days are spent on farm learning the practical application of skills.

Year One

Interns generally live on farm while they work towards achieving level 3 in Agriculture. Interns participate as part of the farmer's household including sharing in day to day duties. If the farm is close, some interns may commute each day.

Year Two

Interns work full time on farm while studying towards level 4 in Agriculture. (Not all interns choose to do the level 4 course in year two, preferring to get more on-farm experience first).

Application Process

To apply for the Whangarei Agricultural & Pastoral Society Farm Intern Programme, the following must be received:

- Online application form
- Give us two people we can contact to find out a bit more about you
- Copy of current passport or birth certificate
- Drivers licence - learners licence is a minimum requirement



LAND BASED TRAINING
better skills, better jobs, better future



Training/Qualifications

Training consists of a mix of theory and practical skills. There will be classroom-based training once a week at Barge Showgrounds Events Centre (or other locations relevant to the module being taught). The other four days will be on farm learning practical skills and applying learnings from the classroom.

Interns will be visited on farm at least twice per month to ensure their training is on track and to get modules signed off when they show they can do the tasks.

At the beginning, basic skills will be covered including:

- Health & Safety
- First Aid
- Tractor, ATV, Motorbike
- Chainsaw Use
- Safety and Gear
- Livestock Handling
- Basic Fencing
- Personal Care and Wellbeing

You are eligible if:

- You're dead keen on farming and the outdoors!
- You are aged between 16 and 24 years as at 1st Feb
- You're a NZ resident
- You agree to follow the rules and conditions of the programme
- A drivers license would be really helpful



Applications

can be submitted
by **email** to
farm@wap.org.nz

or **post** to:
Whangarei A&P Society
PO Box 3
Whangarei 0140

www.gumboots.kiwi



LAND BASED TRAINING
better skills, better jobs, better future

Here is the 'Fine Print' - the Rules!

The following rules must be observed and must be taken as minimum guidelines when working on farm.

Course Rules

- Interns are required to act in an appropriate manner at all times to ensure they promote the internship in a positive way. This is expected when Interns are either on or off farm and includes Social Media.
- Interns are expected to present themselves in a clean and tidy manner each day and to be ready for the day at the time determined by the Farmer.
- It is expected that Interns will go to bed at a reasonable hour.
- Farm property (including all vehicles and equipment) are to be used and cared for in an appropriate manner.
- Intern's working hours will be determined by the Farmer based on the needs of the farm.
- Absolutely no mistreatment of animals will be tolerated.
- No swearing or aggressive behavior at any time.
- No using of or removal of tools or equipment without permission.
- No farm vehicles or private vehicles to be driven by anyone not holding a current driver's license and not without permission.
- Interns are required to make appropriate progress with the theory part of their qualifications.
- Interns need to make their own arrangements to insure personal belongings.
- Interns are expected to complete tasks around the house and grounds as instructed by the Farmer. They may also be required to cook meals and participate in household chores.
- The use of dogs is at the discretion of the Farmer and Tutor.
- If an Intern wishes to hold firearms on site, they must firstly provide their firearms license. Permission from the farmer must be gained prior to bringing them onto the farm. All firearms are to be stored securely as directed by the Farmer.
- The taking of photographs or videos is prohibited without the prior permission of the Farmer and Tutor.

Alcohol, Drugs and Smoking

- No alcohol to be brought onto the property without first gaining permission of the Farmer.
- No vaping or smoking is permitted unless permission is granted by the Farmer.
- Training venues are smoke and vape free.

- Drug use and the possession of drugs is strictly prohibited.
- Interns are required to pass a clear drug test before commencing the programme. They may also be subject to random drug testing.

Health & Safety

- Interns are required to abide by the Farm's Health and Safety Policy at all times.
- Any injury or illness must be reported to the Farmer and/or Field officer immediately.
- Interns must take all practical steps to ensure they are safe during the programme and that they do no harm to other people.
- Interns must report to the Farmer or Tutor any hazard or safety problem that they notice immediately.
- Interns must always use the correct protective clothing or equipment for the task.
- Interns must not carry out any task, or use any plant or equipment, or apply or use any chemical or substance, unless they have trained in the safe use of all plant, objects and protective clothing and equipment that they may be required to use or handle. If you are not sure, report to the Farmer and Tutor.

Leave

- If an intern is absent for three days or more because of illness, the intern is to produce a medical certificate for the period of absence.
- If the intern is still absent due to illness or injury by the end of 10 consecutive working days, he/she may be removed from the course.
- Leave for funerals/ Tangi's, family emergency or special circumstances will be granted on application without penalties, if approved. Interns must first inform the Farmer and Tutor. Proof of the circumstances may be requested.
- Each time an intern is absent without a reasonable excuse he/she will receive a verbal warning.
- On the fifth day (not consecutive days but continued poor attendance) that an Intern is absent without a reasonable excuse, a written warning will be given.
- The next time the intern is absent without reasonable excuse the Intern will be issued a final warning and may be dismissed from the course.
- If an Intern is absent for five consecutive days and fails to contact the Farmer or Tutor, dismissal may result.

DISCLAIMER The information in this prospectus is

Thank you to
the following
Supporters
of the Farm
Internship
Programme



CAMBRIDGE
EST. 1867

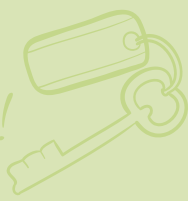
o SaferMe **KAIWAKA**
Hinerangitrust.co.nz



work outside!



Life skills!



Get ya boots on!



life changing

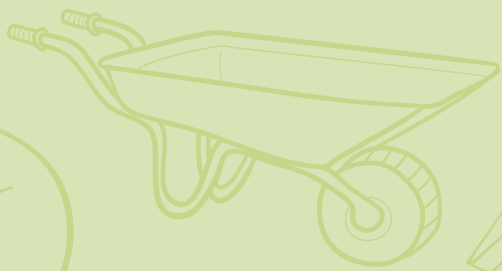
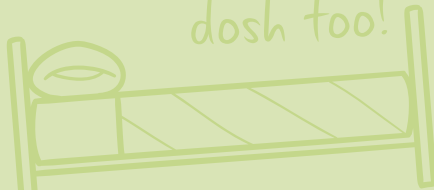
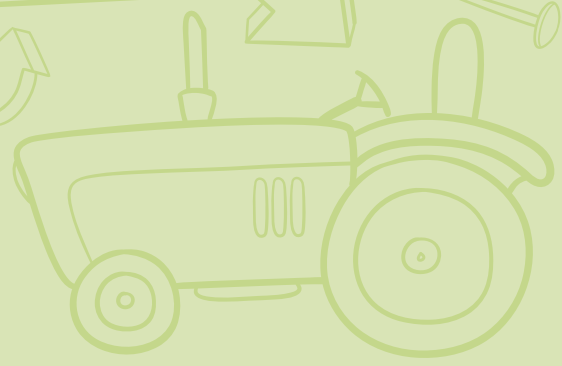


earn while you learn



Zero Fees!

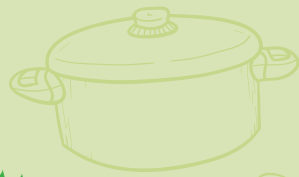
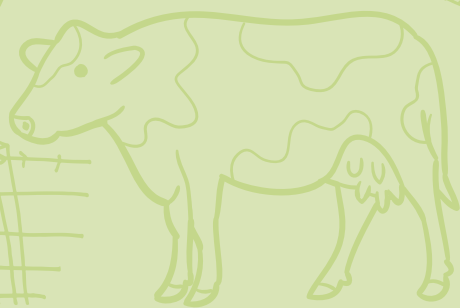
Get a bed, fed, and a bit of dosh too!



Jobs not debt when finished - no student loan!



live on site



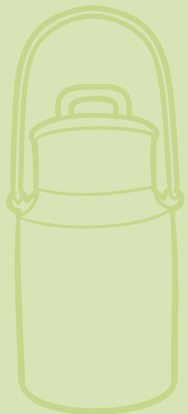
be part of the team



LAND BASED TRAINING
better skills, better jobs, better future

Whangarei A & P Society
PO Box 3
Whangarei 0140
09 438 3109

Land Based Training
191 St Hill Street
Whanganui 4500
06 349 0077



Learn to chainsaw



train your own farm dogs



2 years of your life to change your life

